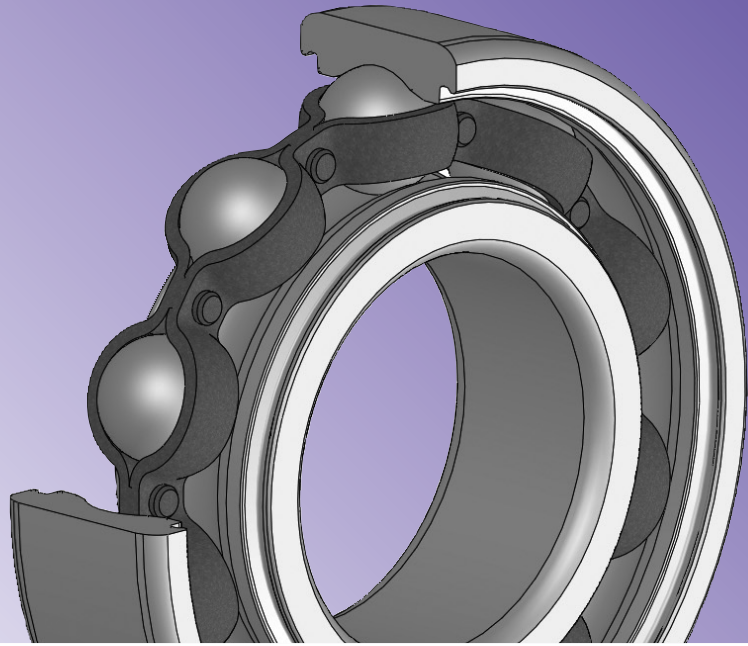


SMT

Grease-Free Bearings

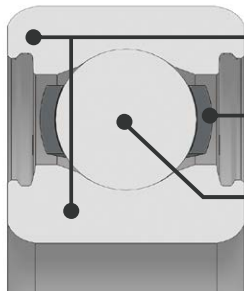


◎Features

No Lubricants Required

Usable without lubricants in environment where lubricants can not be used, by special coating on retainer.
Smooth rotation by low torque, except 2RS type.

◎Specifications

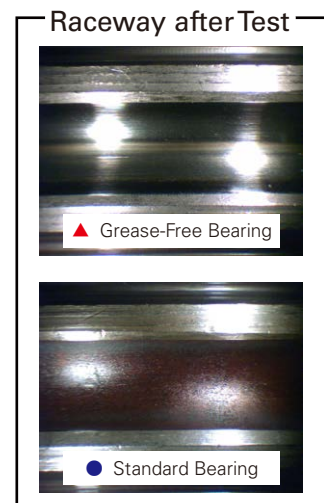
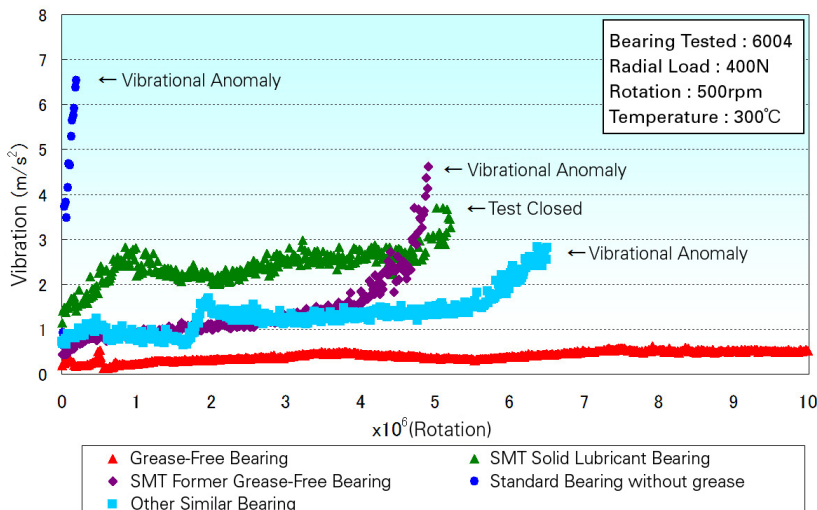


Outer and Inner Rings: AISI440C

Retainer: AISI304 + Special Coating

Balls: AUSI440C

◎Performance



◎Product Specifications

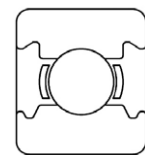
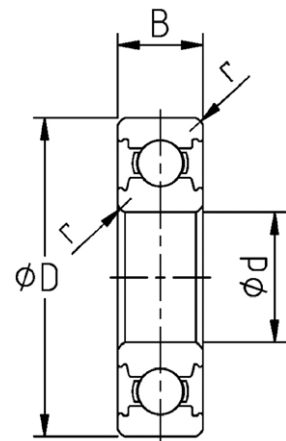
●Dimensions

Bearing Numbers	Bore		O.D.	Width	Chamfer	Allowable Radial Load	Allowable Rotation
	d	D	B	r Min.			
	mm	mm	mm	mm	N	min ⁻¹	
SS 6800 TC2	10	19	5	0.3	90	1090	
SS 6900 TC2	10	22	6	0.3	115	980	
SS 6000 TC2	10	26	8	0.3	195	880	
SS 6200 TC2	10	30	9	0.6	215	770	
SS 6300 TC2	10	35	11	0.6	345	700	
SS 6801 TC2	12	21	5	0.3	80	950	
SS 6901 TC2	12	24	6	0.3	125	880	
SS 6001 TC2	12	28	8	0.3	215	770	
SS 6201 TC2	12	32	10	0.6	290	720	
SS 6301 TC2	12	37	12	1.0	415	640	
SS 6802 TC2	15	24	5	0.3	90	810	
SS 6902 TC2	15	28	7	0.3	185	730	
SS 6002 TC2	15	32	9	0.3	240	670	
SS 6202 TC2	15	35	11	0.6	325	620	
SS 6302 TC2	15	42	13	1.0	485	530	
SS 6803 TC2	17	26	5	0.3	110	730	
SS 6903 TC2	17	30	7	0.3	195	670	
SS 6003 TC2	17	35	10	0.3	255	610	
SS 6203 TC2	17	40	12	0.6	410	540	
SS 6303 TC2	17	47	14	1.0	580	480	
SS 6804 TC2	20	32	7	0.3	170	620	
SS 6904 TC2	20	37	9	0.3	275	550	
SS 6004 TC2	20	42	12	0.6	400	500	
SS 6204 TC2	20	47	14	1.0	545	460	
SS 6304 TC2	20	52	15	1.1	675	440	
SS 6805 TC2	25	37	7	0.3	185	520	
SS 6905 TC2	25	42	9	0.3	300	460	
SS 6005 TC2	25	47	12	0.6	430	440	
SS 6205 TC2	25	52	15	1.0	595	400	
SS 6305 TC2	25	62	17	1.1	880	350	
SS 6806 TC2	30	42	7	0.3	195	440	
SS 6906 TC2	30	47	9	0.3	310	410	
SS 6006 TC2	30	55	13	1.0	560	370	
SS 6206 TC2	30	62	16	1.0	830	340	
SS 6306 TC2	30	72	19	1.1	1140	300	
SS 6807 TC2	35	47	7	0.3	200	390	
SS 6907 TC2	35	55	10	0.6	445	350	
SS 6007 TC2	35	62	14	1.0	680	320	
SS 6207 TC2	35	72	17	1.1	1090	290	
SS 6307 TC2	35	80	21	1.5	1420	270	
SS 6808 TC2	40	52	7	0.3	210	350	
SS 6908 TC2	40	62	12	0.6	585	310	
SS 6008 TC2	40	68	15	1.0	715	290	
SS 6208 TC2	40	80	18	1.1	1240	260	
SS 6308 TC2	40	90	23	1.5	1730	240	
SS 6909 TC2	45	68	12	0.6	600	280	
SS 6009 TC2	45	75	16	1.0	895	260	
SS 6209 TC2	45	85	19	1.1	1390	240	
SS 6309 TC2	45	100	25	1.5	2260	210	
SS 6910 TC2	50	72	12	0.6	620	260	
SS 6010 TC2	50	80	16	1.0	930	240	
SS 6210 TC2	50	90	20	1.1	1500	220	
SS 6310 TC2	50	110	27	2.0	2640	190	
SS 6911 TC2	55	80	13	1.0	705	230	
SS 6011 TC2	55	90	18	1.1	1210	220	
SS 6211 TC2	55	100	21	1.5	1850	200	
SS 6912 TC2	60	85	13	1.0	860	220	
SS 6012 TC2	60	95	18	1.1	1250	200	
SS 6212 TC2	60	110	22	1.5	2230	180	

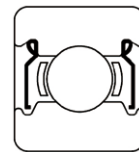
●Standard Specifications

Outer and Inner Rings	AISI440C
Balls	AISI440C
Retainer	AISI304 + Special Coating
Shield	AISI304
Seal	NBR

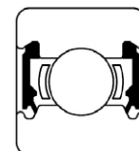
Standard radial clearance is basically C4.



OPEN



ZZ



2RS

Example: SS 6800 ZZ C4 TC2

The performance data and expressions are provided as a general guide only.
The specifications are subject to change without notice for the improvement of performance.

SMT

Nankai Seiko Co., Ltd.

3-6-1, Techno Stage, Izumi, Osaka 594-1144, Japan.

TEL 0725-53-5563 FAX 0725-53-5576

URL <http://www.smtbearing.com>